



Henley Drive, London, SE1 3AR

Nestled in a peaceful cul-de-sac in the heart of ever-popular Bermondsey SE1, this spacious two-bedroom freehold house offers the perfect blend of tranquility and urban convenience. Just a short walk from the vibrant Bermondsey Street, Maltby Street Market, and the Blue Market, this home is ideally located for enjoying the best of South London living. On the ground floor, you'll find a bright and beautifully maintained reception room, a sleek modern kitchen with ample dining space, and direct access to a generously sized private garden - ideal for entertaining or relaxing outdoors. Upstairs, two well-proportioned double bedrooms feature built-in wardrobes, complemented by a contemporary and stylish family bathroom.

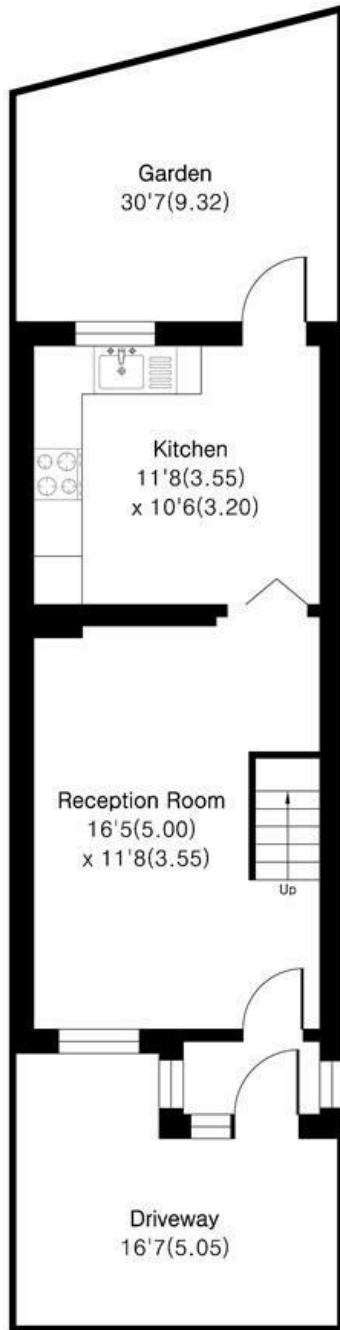
- Generous Two-Bedroom Freehold House
- Private Parking
- Large Garden with Additional Storage
- Smart Home Automation System
- Loft Ready for Extension
- Excellent Transport Links
- Surrounded by Local Amenities
- Prime Bermondsey Location
- Chain Free

Alex & Matteo
ESTATE AGENTS

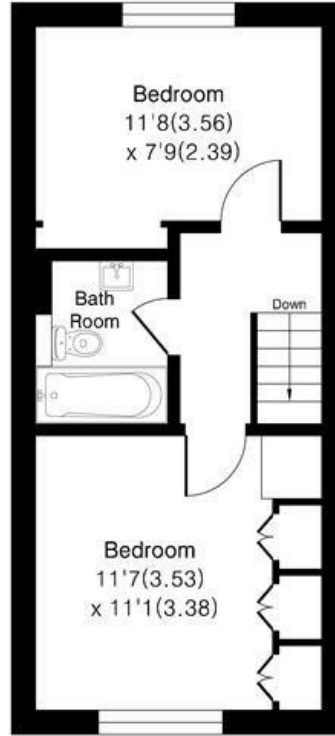
£2,400 Per month

Henley Drive SE1

Approximate Area = 660 sq ft / 61.3 sq m



Ground Floor



First Floor



Floor plan Produced in accordance with RICS Property Measurement 2nd Edition. Incorporating International Property Measurement Standards (IPMS2 Residential). Produced for Alex & Matteo Estate Agents.

